

3M MARKERS & LOCATORS

Precision Accuracy In All Field Conditions

3M Science.
Applied to Life.™

BYTEWORX
Connectivity, Simplified



BYTEWORX

Connectivity, Simplified

At BYTEWORX, we constantly endeavour to provide a seamless experience to our clients in the most progressive and technologically viable way possible. Since inception in the year 2014, we are expanding with each passing day in terms of gamut of services & solutions we offer, cost-effective solutions, via research & development of technically superior products. Our teams consists of industry experts holding vast experience and technical know-how of successfully undertaking large-scale projects.

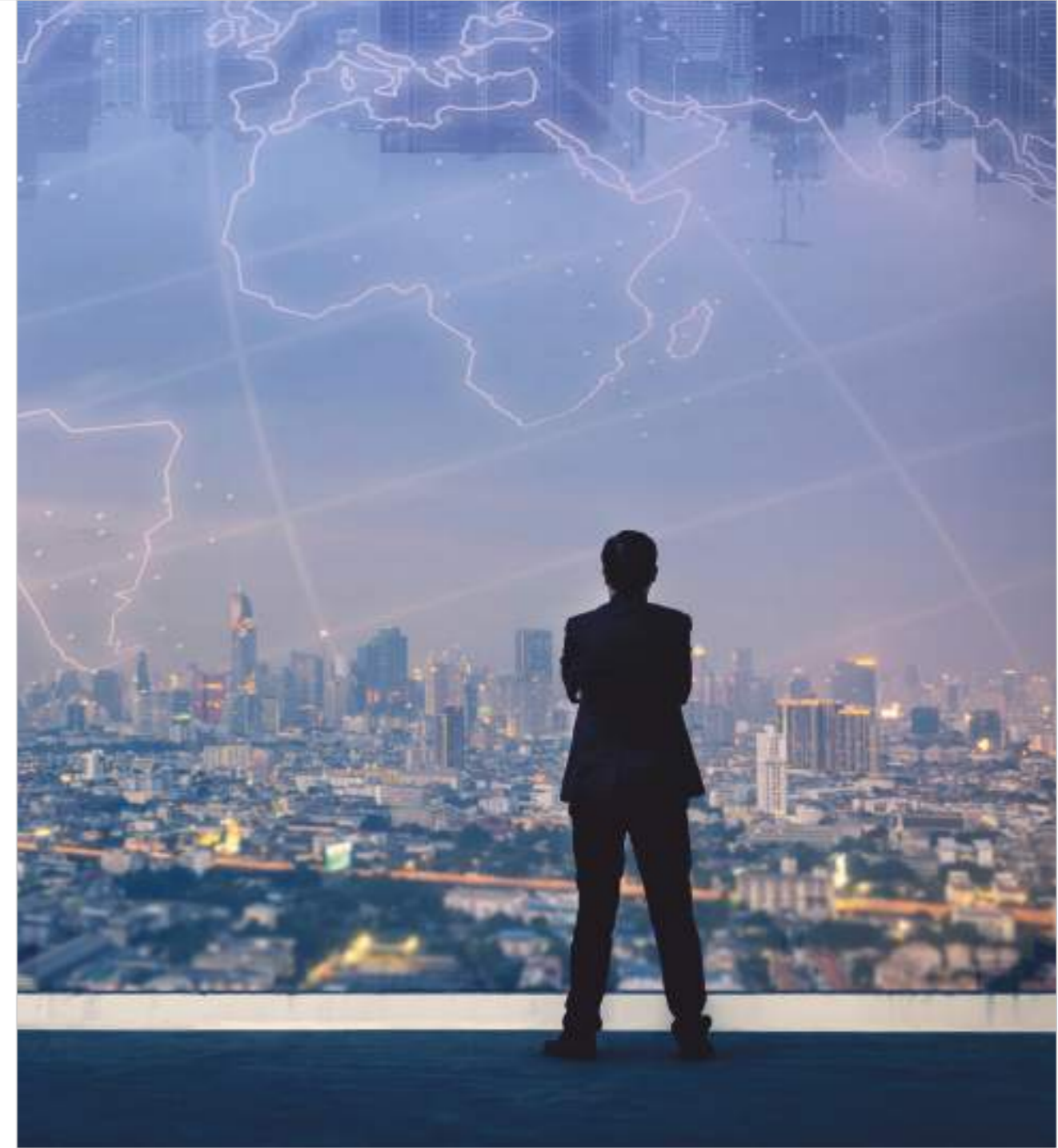


Our Mission

Our Mission is to provide technically sound products, solutions, and services complying with Clients' expectations at a competitive price. This way, we aspire to align our processes we are listed in the top 10 Companies of India providing solutions for varied sectors like mobility, telecom, and infrastructure Projects.



1.



Our Vision

Our vision is to maintain consistency in delivery of quality and timely services to our valued clients. We envision to pay huge emphasis of constant R & D of our processes & products to build long-term associations with Industry leaders.

2.

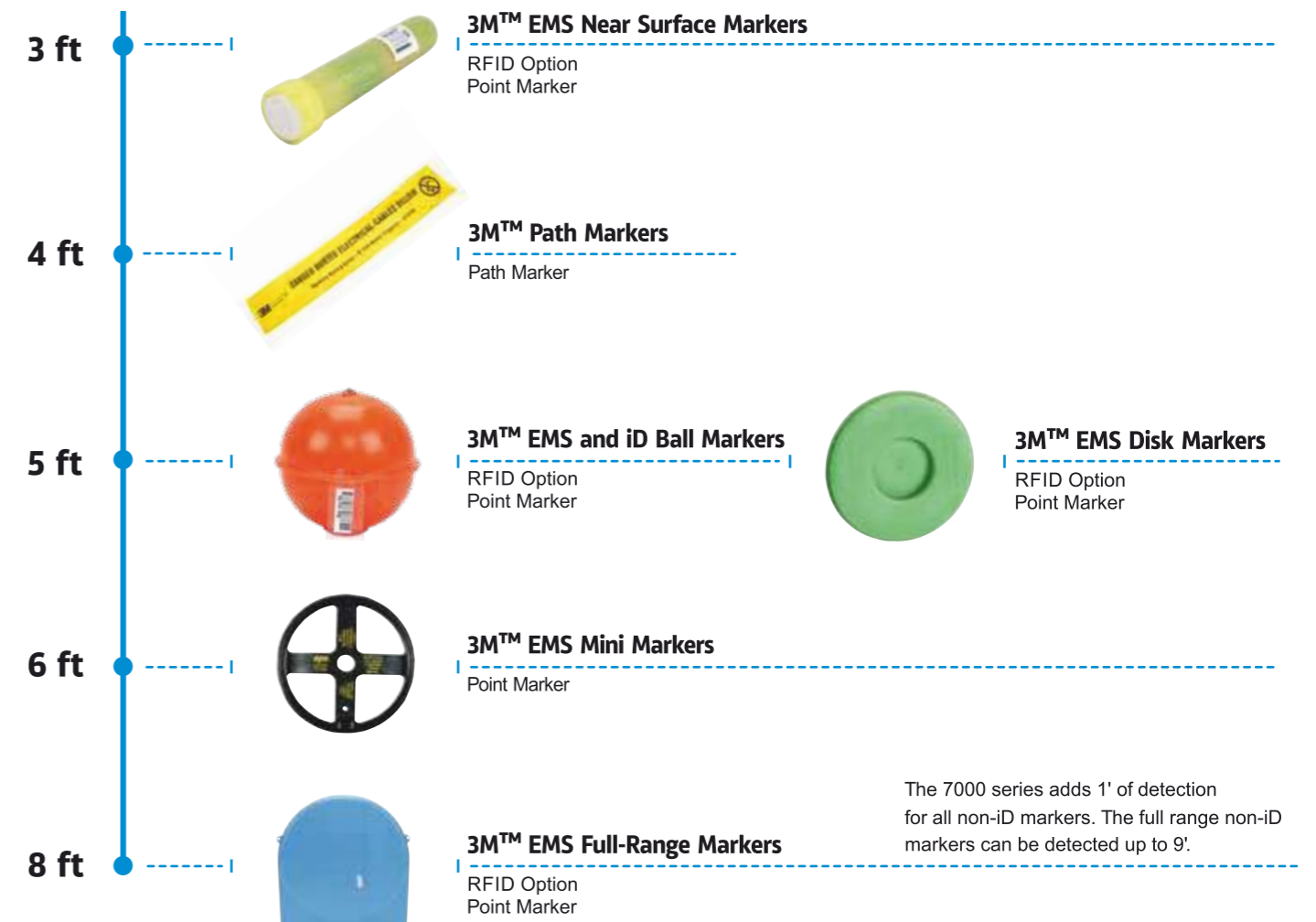
Table of Contents

Marker Burial Depth Chart	3
3M™ Point and Path Markers	4-5
3M™ Electronic Marking System (EMS) Warning Tape 7900 Series	4
3M™ EMS Caution Tape 7900 Series	4
3M™ EMS Near Surface Marker	5
3M™ EMS Ball Marker	5
3M™ EMS Mini-Marker	5
3M™ EMS Full Range Marker	5
3M™ EMS Disk Marker	5
3M™ Dynatel™ Locator Section Chart	6
3M™ Dynatel™ Locator Features by Model	7
3M™ Dynatel™ Locator X Series	8
EMS /ID/Marker Locator 1420X	8
EMS/ID/Marker/Path Locator 7420X	8
EMS/ID/Marker/Cable/Pipe Locator 2550X-ID	8
EMS/ID/Marker/Cable/Pipe/Fault Locator 2573X-ID	8
EMS/ID/Marker/Path/Cable/Pipe Locator 7550X	8
EMS/ID/Marker/Path/Cable/Pipe/Fault Locator 7573X	8
3M™ Dynatel™ 7500 Series	9
EMS/ID/Marker/Path/Cable/Pipe Locator 7550	9
EMS/ID/Marker/Path/Cable/Pipe/Fault Locator 7573-ID	9
3M™ Dynatel™ Locator 2200M, 2500 Series	10
EMS/ID/Marker/Cable/Pipe Locators 2250M-ID, 2550-ID	10
Cable/Pipe Locators 2250M, 2550	10
EMS/ID/Marker/Cable/Pipe/Fault Locators 2273M-ID, 2573-ID	10
Cable/Pipe/Fault Locators 2273M, 2573	10
3M™ Dynatel™ Locator 2200 Series	11
Cable/Pipe Locator 2250	11
Cable/Pipe/Fault Locator 2273	11
3M™ Dynatel™ Marker Locator 1420	12
EMS/ID/Marker Locator 1420-ID	12
3M™ Dynatel™ Locator 7420	13
EMS/ID/Marker Locator 7420-ID	13
Accessories	14
3M™ Dynatel™ Locator Kits Ordering Information	17

Marker Burial Depth Chart



Save time and money by quickly pinpointing the location of buried assets with 3M™ Point and Path Markers and our Electronic Marking System (EMS) technology. Designed to be placed in various ranges of burial depths, our markers protect your critical assets wherever they are.



Note: Burial depths are approximate. Review the marker specification sheet and locator compatibility for precise indication of burial depth for each of the marker models.

Path Markers

LATEST

A maintenance-free solution for marking and locating

3M™ Electronic Marking System (EMS) Warning Tape 7900 Series and 3M™ EMS Caution Tape 7900 Series provide a virtually maintenance-free solution for marking and locating the path of underground plastic pipes and conduits. Together, they help eliminate problems and costs associated with tracer wire and test stations.

The 3M™ EMS Warning Tape 7900 Series and 3M™ EMS Caution Tape 7900 Series are both embedded with markers that are activated using the 3M™ Dynatel™ Locators 7000 Series. The EMS Warning Tape 7900 Series also includes an additional high strength core material feature called extreme tensile (XT) which provides an early warning for excavators **that an underground asset is below.**

- Can be installed near or above buried assets
- Easy to follow, creating a detectable path above ground
- For use in open trench applications
- Does not require batteries and there's no need to hook up an external transmitter or spend time searching for access points
- The markers work independently, so even if a section of path marking tape is cut or removed, the other markers on the tape will continue to provide an accurate location
- Come in 5 or 6 frequencies, creating a unique identification for each utility type

CAUTION WASTE WATER LINE BURIED BELOW

CAUTION WATER LINE BURIED BELOW

DANGER BURIED ELECTRICAL CABLES BELOW

DANGER BURIED GAS MAIN BELOW

CAUTION RECLAIMED WATER LINE BURIED BELOW

CAUTION COMMUNICATION CABLE BELOW

	Depth	Length	Spacing	Strength	Width	Telephone	Power	Gas	Water	Wastewater	Reclaimed
3M™ EMS Warning Tape 7900 Series	up to 4 ft	500 ft	8 ft	13 kN	4 in, 6 in, or 12 in	7901-XT	7902-XT	7905-XT	7903-XT	7904-XT	7908-XT
3M™ EMS Caution Tape 7900 Series	up to 4 ft	500 ft	8 ft	1.6 kN	6 in	7901	7902	7905	7903	7904	7908

The optimal depth for the XT early warning system is < 2 ft (60 cm) while the embedded EMS markers are locatable < 4 ft (1.2 m).
 XT – Extreme Tensile, EMS – Electronic Marker System

Point Markers

Marking points of interest

Unlike surface features, maps and other methods of recording position, our Point Markers are a point of reference you can depend on.

3M Non-iD Markers:

- Operate in all soil types; under asphalt, cement, and wet or dry soil
- Provide easy positive identification with each utility having its own frequency
- Color-coded to APWA standards

3M iD Markers can be customized to include customer-specific information:

- Facility data
- Material type and size
- Type of application
- Placement date

Access all of this information in the field through a 3M™ Dynatel™ ID capable locator, or by uploading and using with your GIS system.

	Detection/Read Range	Type	Telephone	Power	CATV	General Purpose	Water	Wastewater	Gas
3M™ EMS Near Surface Marker	3 ft	EMS	1432	1433	-	-	1434	1435	1436
	2 ft	iD	1432-XR/iD	1433-XR/iD	1437-XR/iD	1438-XR/iD	1434-XR/iD	1435-XR/iD	1436-XR/iD
3M™ EMS Ball Marker	6 ft	EMS	1401-XR	1402-XR	1407-XR	1408-XR	1403-XR	1404-XR	1405-XR
	5 ft	iD	1421-XR/iD	1422-XR/iD	1427-XR/iD	1428-XR/iD	1423-XR/iD	1424-XR/iD	1425-XR/iD
3M™ EMS Mini-Marker	6 ft	EMS	1255	1256	-	-	1257	1258	1259
3M™ EMS Full Range Marker	9 ft	EMS	1250	1251	-	-	1252	1253	1254
	8 ft	iD	1250-XR/iD	1251-XR/iD	-	1248-XR/iD	1252-XR/iD	1253-XR/iD	1254-XR/iD
3M™ EMS Disk Marker	5 ft	EMS	1411-XR	1412-XR	1417-XR	1418-XR	1413-XR	1414-XR	1415-XR
	5 ft	iD	1411-XR/iD	1412-XR/iD	-	1418-XR/iD	1413-XR/iD	1414-XR/iD	1415-XR/iD



3M™ EMS Near Surface Marker
 Ideal for marking at shallow depths of 2–3'



3M™ EMS and iD Ball Marker
 Self-leveling feature, suited for depths of 5–6'



3M™ EMS Mini-Marker
 Designed for maintaining a stable position after placement at depths of 6'



3M™ EMS Full-Range Marker
 Suited for deep applications of up to 8–9'



3M™ EMS Disk Marker
 Ideal for marking at shallow depths of 3–5'

Dynatel™ Locator Selection Chart



Do you want to locate cable/pipe?

Yes, I want to locate a cable

No, I want to locate an Electronic Marking System (EMS) Marker

Do you want to locate sheath fault?

Yes, I want to locate a cable and sheath fault

No, I only want to locate a cable

Do you want to locate EMS Marker?

Do you want to locate EMS Marker?

Which EMS Marker do you want to locate?

Point

Point and/or Path

No Marker

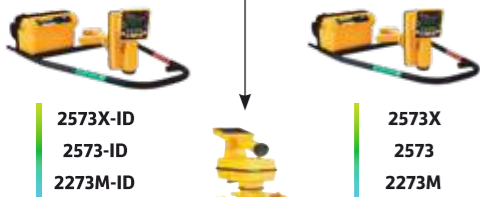
Point

Point and/or Path

No, only cable locating

Point

Point and/or Path

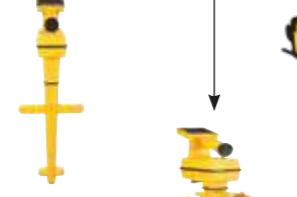


2573X-ID
2573-ID
2273M-ID



2573X
2573
2273M

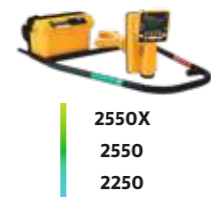
7573X-ID



2550X-ID
2550-ID
2250M-ID



7550X-ID



2550X
2550
2250



1420X-ID
1420-ID



7420X-ID
7420-ID

The numbers above reference Dynatel Locator models.
Some kits have 3 or 12 W transmitters. 12 W transmitters can be useful with locates that have a weak signal. To pick specific kits please refer to the locator kit ordering information starting on page 18.

Dynatel™ Locator Features by Model

Features	Dynatel Locator Models									
	1420X-iD	7420X-ID	2500X	7500X Series	7500 Series	2500 Series	2200M Series	2200 Series	7420	1420
Pipe and cable locate			✓	✓	✓	✓	✓	✓		
Electronic marker locate/read/write	✓	✓	*	✓	✓	*	*		✓	✓
EMS Frequencies	8	8	8	8	7	7	7		7	7
Path Marking Frequencies		6		6	6				6	
Path Marker locate		✓		✓	✓				✓	
Active frequencies			6	6	6	6	4	4		
Inductive frequencies			✓	✓	✓	✓	✓	✓		
Passive power			✓	✓	✓	✓	✓	✓		
Passive low frequency (LF)			✓	✓	✓	✓	✓	✓		
Sonde locating			✓	✓	✓	✓	✓	✓		
Fault locate (A-frame)			*	*	*	*	*	*		
Transmitter power options (watts)			3 or 12	3 or 12	3, 5 or 12	3, 5 or 12	3, 5 or 12	3, 5 or 12		
3M™ Dyna-coupler size (inches)			3 or 4.5	3 or 4.5	3 or 4.5	3 or 4.5	3 or 4.5	3 or 4.5		
3M™ Rechargeable Battery 220ORB (Tx)			*	*	*	*	*	*		
Li-Ion battery (Rx)	✓	✓	✓	✓	*	*	*	*	*	✓
GPS compatible	✓	✓	✓	✓	✓	✓	✓		✓	✓
Built in GPS	✓	✓	✓	✓						
Bluetooth® wireless technology	✓	✓	✓	✓						
USB	✓	✓	✓	✓						

✓ Standard feature * Optional feature

Dynatel™ Locator X Series

Electronic Marking System (EMS) /ID/Marker Locator 1420X

EMS/ID/Marker/Path Locator 7420X

EMS/ID/Marker/Cable/Pipe Locator 2550X-ID

EMS/ID/Marker/Cable/Pipe/Fault Locator 2573X-ID

EMS/ID/Marker/Path/Cable/Pipe Locator 7550X

EMS/ID/Marker/Path/Cable/Pipe/Fault Locator 7573X

Our latest innovation, the Dynatel X Series Locators are best in class, allowing you to quickly locate underground assets. They are equipped with Bluetooth® wireless technology receivers, which none of our other locators have, along with improved software and GPS capabilities.



- Receiver with Bluetooth® wireless technology
- Integrated USB port is compatible with USB Type-C connector
- Internal GPS can be saved internally or directly to a memory stick compatible with USB Type-C connector
- RFID Marker write/read/locate capabilities
- EMS Path Marking Antennas
- Multiple EMS antennas for maximum locate capabilities
- Large LCD display with image-driven graphical interface
- Integrated tone functions
- Dynatel Locators 2573X and 7573X include fault locating
- 12 W transmitter



3M™ Dynatel™ Locators 1420X/7420X Series



3M™ Dynatel™ Locator 2550X-ID/2573X-ID Series



3M™ Dynatel™ Locator 7550X/7573X Series

Dynatel™ Locators 7550/7553 Series

Electronic Marking System (EMS)/ID/Marker/ Path/Cable/Pipe Locator 7550

EMS/ID/Marker/Path/Cable/Pipe/Fault Locator 7573-ID

Choose the Dynatel Locators 7500 Series for powerful, precision locating. These locators combine advanced digital processing and simple interfaces to help you locate 3M™ Path Markers as well as existing electronic markers. As with all 3M™ Dynatel™ ID Capable Locators, the 7500 series provides accurate pipe, cable, or sonde depth measurements, giving a digital readout in feet and inches, or centimeters (user-selectable).

- 6 active frequencies for direct connect and transmitter output options in 3, 5 or 12 watts
- 4 induction frequencies with maximum allowed output power
- Trace view mapping display
- Push-button depth to all underground markers (passive and ID)
- Receiver rechargeable battery kit
- All frequency mode in direct connect (4 simultaneously)
- Automatic impedance matching
- Ohm meter with high-voltage detection
- Rugged, industrial temperature range
- 240VAC output protection
- Reads and writes to 3M ID Markers



3M™ Dynatel™ Locator and Transmitter 7573-ID



Dynatel™ Locator

2200M and 2500 Series

Electronic Marking System (EMS) /ID/Marker/Cable/Pipe Locators 2250M-ID, 2550-ID

Cable/Pipe Locators 2250M, 2550

EMS/ID/Marker/Cable/Pipe/Fault Locators 2273M-ID, 2573-ID

Cable/Pipe/Fault Locators 2273M, 2573

Offering a broad feature set with advanced digital processing, the Dynatel Locators 2200M and 2500 Series combine simple interfaces with precision locating capabilities. In addition to the 2200M capabilities, the 2500 presents two extra frequencies along with a trace view mode that provides an intuitive user interface that graphs the position and direction of the utility being located.



3M™ Dynatel™ Locators
2200 Series



3M™ Dynatel™ Locators
2500 Series

- 5 locating modes featuring highly accurate peak mode based on peak antenna response
- 6 active frequencies (see chart on page 7 for additional details)
- Transmitter has 3, 5 and 12 W (maximum) power output options
- Electronic marker locate/read/write and alert mode option seamlessly integrated into one unit
- GPS communication capability for GIS mapping of pipe/cable path and electronic markers



3M™ Dynatel™ Locator and Transmitter 2200 with 3M™ Earth Contact Frame

Dynatel™ Locators 2200 Series

Cable/Pipe Locator 2250

Cable/Pipe/Fault Locator 2273

The Dynatel Locators 2200 Series are built specifically to find the path and estimated depth of buried cables and pipes. They also offer toning of aerial cable, direct readout of active duct probe and cable/pair identification.

Receivers have an “expander” function which differentiates between two conductors carrying the same tone by enhancing the amplitude difference. Both the receiver and the transmitter also feature a self-test that runs each time the unit is turned on.



3M™ Dynatel™ Locator and Transmitter 2250/2273

Dynatel Locators 2200 Series have four active frequencies:

- Passive frequencies (for power)
- Cathodic protection
- CATV
- Auxiliary frequencies (or long distance locating from remote transmitters)

Other features include:

- Three locating modes:
Peak, Null and Differential
- All frequency mode in direct connection
(4 frequencies simultaneously)
- Transmitter has 3 and 5 W output options
- Ability to find underground faults

Dynatel™ Marker Locator 1420

Electronic Marking System (EMS) /ID/Marker Locator 1420-ID

The Dynatel Marker Locator 1420 is a high-performance locator that quickly and efficiently estimates the exact location of all underground markers. This locator can simultaneously locate two marker frequencies.

- Detects industry-standard electronic marker frequencies
- 3M iD Marker read/write capability and depth estimation
- Marker maximum read range up to 8 ft (2.4 m) depth
- GPS communication capability for GIS mapping of pipe/cable path and electronic markers
- Light weight with excellent balance and ergonomics
- Large, backlit high-resolution graphic display



3M™ Dynatel™ Marker Locator 1420-ID

Dynatel™ Locator 7420

Electronic Marking System (EMS) /ID/Marker/Path Locator 7420-ID

The Dynatel Locator 7420 is a high-performance locator that quickly and efficiently locates 3M™ Path Markers as well as existing electronic markers.

- Locate all frequencies of 3M™ Path Marking Tape
- Detects industry-standard electronic marker frequencies
- 3M iD marker read and write capability
- Locate 3M Path Markers and be alerted to electronic marker of same frequency
- Marker maximum read range up to 9 ft (2.4 m) depth
- GPS communication capability for GIS mapping of pipe/cable path and electronic markers
- Push-button depth estimation for 3M iD markers and 3M Path Markers
- Large, backlit high-resolution graphic display
- Rechargeable battery kit



3M™ Dynatel™ Locator 7420

Locating and Marking Accessories



78-9000-5055-6

3M™ Assembly Harness Alkaline Battery Pack With Diode

Used to connect Alkaline batteries to locators.



7000027975

3M™ Ribbed Battery Compartment Cap With Liner For Dynatel™ M-Series Cable/Pipe Locators

The cap screws onto the locator handle to help protect the battery.



26-1022-0044-6

3M™ Dynatel™ Locators USB Cord, Type-C Male to Male, 6 ft

USB Type-C® cable to connect an X-Series locator to a PC.



26-1021-9989-5

3M™ Dynatel™ Locators USB Type-C Li-Ion Battery Charger

USB Type-C® charger for the Li-Ion battery in locator.



78-9000-0087-4

3M™ USB Cord For 2200M/2500 Series and 1420, 1 Kit

USB to RS-232 cable to connect an M-Series, 2500 Series, 7000 Series or 1420 locator to a PC.



26-1022-0046-1

3M™ Dynatel™ Locators USB Type-C Audio Adapter, 3.5 mm Female

USB Type-C® 3.5 mm adapter to connect headphones.



78-9000-0242-5

3M™ Dynatel™ Locators Extra Large Direct Connect Clips

Extra large clips to be used with large connection points.

Locating and Marking Accessories



7000058654

3M™ 6" (15.2 cm) Dyna-Coupler with Pouch

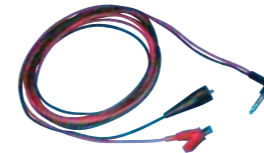
Permits coupling of RF trace tone to large diameter cables, bundle cables, and cables enclosed in accessible non-metallic ducts. For use on cables and conduits with a maximum diameter of 6.9" (17.5 cm).



7000057745

3M™ Small Clip 1/4" (6.4 mm) Direct Connect, 5-foot Transmitter Cable, Telephone

Two-lead, 5' (1.5 m) cables used for direct connection to conductor and ground. The 9012 cable has smaller Telco style alligator clips with an insulation piercing needle incorporated.



7000058141

3M™ Small Clip 1/4" (6.4 mm) Direct-Connect Transmitter Cable For All Cable/Fault Locators

Two-lead, 10' (3 m) cable used for direct connection to cable and ground.



7000058140

3M™ Large Clip 5/8" (15.9 mm) Direct-Connect Transmitter Cable

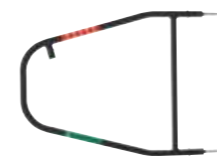
Two-lead, 10' (3 m) cable used for direct connection to cable and ground.



7000043006

3M™ Ground Extension Cable

Extends ground capability to 12' (3.7 m).



7000031431

3M™ Earth Contact Frame

Used only when locating sheath (earth return) faults. It indicates direction to the fault and is color coded to correspond with the Receiver's indicator.



7000031433

3M™ Earth Contact Frame Cable

For use with the 3M™ Earth Contact Frame 3014 for sheath (earth return) fault location; 4' (1.2 m) in length.

Locating and Marking Accessories



7000057820

3M™ Ground Rod

For applying ground capability, made of stainless steel.



7010321054

3M™ AC Charger

For use with 3M™ Dynatel™ 7000 and 2500 Series Locators.



7000058653

3M™ Rechargeable Battery

For use with 5 W and 12 W transmitters (non-spillable).



7000058906

3M™ Rechargeable Battery Pack

For use with 3M™ Dynatel™ 7000 and 2500 Series Receiver.



7000057744

3M™ 3" (7.6 cm) Dyna-Coupler

Permits coupling of RF trace tone to cables with a maximum diameter of 3" (7.6 cm).



7000031716

3M™ 4.5" (11.4 cm) Dyna-Coupler

Permits coupling of RF trace tone to cables with a maximum diameter of 4.5" (11.4 cm).

Locating and Marking Accessories



7000031432

3M™ Coupler Cable

For use with any Dynatel Transmitter, Receiver, or Coupler: 12' (3.7 m) in length.



7000006221

3M™ Dynatel™ Locator Coupler Accessory Kit

Contains a 4001 4.5" (11.4 cm) 3M Dyna-coupler and a 3M Coupler Cable 9011 with a case that can be attached to the transmitter.



7000058326

3M™ 3" (7.6 cm) Cable Locator Coupler Accessory Kit

Contains a 3001 3" (7.6 cm) Dyna-coupler and a Coupler Cable 9011 with a case that can be attached to the transmitter.



7000006166

3M™ Soft Carrying Bag

Carrying bag for the 2200M/2500/7000 series locators.

Dynatel™ Locator Kits Ordering Information

		Cable/Pipe Locate	Fault Locate	Electronic Marker Locate	Path Marker Locate	Transmitter Output	Direct Connect Cable – small clips	Direct Connect Cable – large clips	Coupler Size (inches)	2200RB Rechargeable Battery	Receiver Rechargeable Battery	Cigarette Lighter Adapter Cable	Carrying Bag
	Point and path markers enabled												
	Point markers enabled												
	No point or path enabled												
7573X Series Kits	In addition to the items checked below, each kit contains an A-Frame, ground rod, Alkaline battery accessories and USB Type-C® accessories.												
7100253529	7573X U12 Mkr/Pth Cb/Pp/Fit Loc 4.5" 12 W	x	x	x	x	12 W		x	4.5	x	x	x	x
7100253528	7573X C12 Mkr/Pth Cb/Pp/Fit Loc 3" 12 W	x	x	x	x	12 W	x		3	x	x	x	x
7100253536	7573X U3 Mkr/Pth Cb/Pp/Fit Loc 4.5" 3 W	x	x	x	x	3 W		x	4.5		x		
7100253209	7573X C3 Mkr/Pth Cb/Pp/Fit Loc 3" 3 W	x	x	x	x	3 W	x		3		x		x
7550X Series Kits	In addition to the items checked below, each kit contains a ground rod, Alkaline battery accessories and USB Type-C® accessories.												
7100253527	7550X U12 Mkr/Pth Cb/Pp Loc 4.5" 12 W	x		x	x	12 W		x	4.5	x	x	x	x
7100253534	7550X U3 Mkr/Pth Cb/Pp Loc 4.5" 3 W	x		x	x	3 W	x		4.5		x		x
7420X	Each kit contains Alkaline battery and USB Type-C® accessories.												
7100213466	7420X ID Marker/Path Locator			x	x						x		
2573X Series Kits	In addition to the items checked below, each kit contains an A-Frame, ground rod, Alkaline battery accessories and USB Type-C® accessories.												
7100253061	2573X-ID U12 Mkr Cb/Pp/Fit Loc 4.5" 12 W	x	x	x		12 W		x	4.5	x	x	x	x
7100253116	2573X-ID C12 Mkr Cb/Pp/Fit Loc 3" 12 W	x	x	x		12 W	x		3	x	x	x	x
7100253117	2573X-ID U3 Mkr Cb/Pp/Fit Loc 4.5" 3 W	x	x	x		3 W		x	4.5		x		x
7100253115	2573X-ID C3 Mkr Cb/Pp/Fit Loc 3" 3 W	x	x	x		3 W	x		3		x		x
7100253525	2573X C12 Cb/Pp/Fit Loc 3" 12 W	x	x			12 W	x		3	x	x	x	x
7100253522	2573X C3 Cb/Pp/Fit Loc 3" 3 W	x	x			3 W	x		3		x		x
2550X Series Kits	In addition to the items checked below, each kit contains a ground rod, Alkaline battery accessories and USB Type-C® accessories.												
7100253205	2550X-ID U12 Mkr Cb/Pp Loc 4.5" 12 W	x		x		12 W		x	4.5	x	x	x	x
7100253523	2550X-ID C12 Mkr Cb/Pp Loc 3" 12 W	x		x		12 W	x		3	x	x	x	x
7100253204	2550X-ID U3 Mkr Cb/Pp Loc 4.5" 3 W	x		x		3 W		x	4.5		x		x
7100253532	2550X-ID C3 Mkr Cb/Pp Loc 3" 3 W	x		x		3 W	x		3		x		x
7100253521	2550X C12 Cb/Pp loc 3" 12 W	x				12 W	x		3	x	x	x	x
7100253530	2550X C3 Cb/Pp Loc 3" 3 W	x				3 W	x		3		x		x
1420X	Each kit contains battery and USB Type-C® accessories.												
7100213431	1420X ID Marker Locator			x							x		
X-Series Receiver Only	In addition to the items checked below, each kit contains Alkaline battery accessories and USB Type-C® accessories.												
7100213428	7573X Mkr/Pth Cb/Pp/Fit Loc Only	x	x	x	x						x		
7100253533	7550X Mkr/Pth Cb/Pp Loc Only	x		x	x						x		
7100213471	2573X-ID Mkr Cb/Pp/Fit Loc Only	x	x								x		
7100253535	2573X Cb/Pp/Fit Loc Only	x	x								x		
7100253531	2550X-ID Mkr Cb/Pp Loc Only	x		x							x		
7100213431	2550X Cb/Pp Loc Only	x									x		
Transmitter Only	In addition to the items checked below, each kit contains a ground rod and Alkaline batteries.												
7100158928	2573-T12 M-SERIES Transmitter Only, US 12 W	x	x			12W	x	x		x		x	
7100144283	2550-T12 M-SERIES Transmitter Only, US 12 W					12W	x	x		x		x	

		Cable/Pipe Locate	Fault Locate	Electronic Marker Locate	Path Marker Locate	Transmitter Output	Direct Connect Cable – small clips	Direct Connect Cable – large clips	Coupler Size (inches)	4.5" Coupler & Cable	2200RB Rechargeable Battery	Cigarette Lighter Adapter Cable	Carrying Bag
	Point and path markers enabled												
	Point markers enabled												
	No point or path enabled												
7573 Series Kits	In addition to the items checked below, each kit contains an A-Frame, ground rod, Alkaline battery accessories and USB Type-C® accessories.												
7100028741	7573-ID/U12	x	x	x	x	12 W		x	4.5	x	x	x	x
7010399273	7573-ID/C12	x	x	x	x	12 W	x		3		x	x	x
7000148872	7573-ID/U5	x	x	x	x	5 W		x	4.5		x	x	x
7010321051	7573-ID/C5	x	x	x	x	5 W	x		3		x	x	x
7000148873	7573-ID/5-NA	x	x	x	x	5 W							
7010399271	7573-ID/U3	x	x	x	x	3 W		x	4.5				x
80-6300-0278-2	7573-ID/C3	x	x	x	x	3 W	x		3				x
7550 Series Kits	In addition to the items checked below, each kit contains a ground rod, Alkaline battery accessories and USB Type-C® accessories.												
7000148870	7550-ID/U12	x		x	x	12 W		x	4.5		x	x	x
7000148869	7550-ID/U5	x		x	x	5 W			4.5		x	x	x
7000148871	7550-ID/5-NA	x		x	x	5 W							
7000148868	7550-ID/U3	x		x	x	3 W		x	4.5				x
7420	Each kit contains Alkaline battery and USB Type-C® accessories.												
7000031757	7420			x	x								
2573 Series Kits	In addition to the items checked below, each kit contains an A-Frame, ground rod, Alkaline battery accessories and USB Type-C® accessories.												
7100062440	2573-ID/C12	x	x	x		12 W	x		3			x	
7000058738	2573-ID/U12	x	x	x		12 W		x	4.5	x	x	x	x
7010399530	2573-C12	x	x			12 W	x		3			x	
7000133084	2573-U12	x	x			12 W		x	4.5	x	x	x	x
7010397854	2573-ID/C5-4FREQ	x	x	x		3 W	x		3				
7010351930	2573-ID/U3	x	x	x		3 W		x	4.5				x
7010399531	2573-ID/C3-4FREQ	x	x	x		3 W	x		3			x	
7010401500	2573-U3	x	x			3 W		x	4.5				x
7010297364	2573-C3/4FREQ	x	x			3 W	x		3				
2550 Series Kits	In addition to the items checked below, each kit contains a ground rod, Alkaline battery accessories and USB Type-C® accessories.												
7000133083	2550-ID/U12	x		x		12 W		x	4.5	x	x	x	x
7000133082	2550-U12	x				12 W		x	4.5	x	x	x	x
7000133715	2550-ID/U3	x		x		3 W		x	4.5				x
7000133714	2550-U3	x				3 W		x	4.5				x
2273M Series Kits	In addition to the items checked below, each kit contains an A-Frame, ground rod, Alkaline battery accessories and USB Type-C® accessories.												
7000145537	2273M-ID/UCU12W-RT	x	x	x		12 W	x	x	3		x	x	x
7000132845	2273M-ID/UU5W-RT	x	x	x		5 W		x	3				
7000132847	2273M-ID/UU3W-RT	x	x	x		3 W		x	3				
7000058554	2273M-ID/UC5W-RT	x	x	x		5 W	x		3			x	
87000132846	2273M-ID/UC3W-RT	x	x	x		3 W	x		3				
7000133062	2273M-UCU12W/RT	x	x			12 W	x	x	3		x	x	x
7000132850	2273M-UU5W-RT	x	x			5 W		x	3			x	
7000132852	2273M-UU3W-RT	x	x			3 W		x	3				
7000132848	2273M-UC5W-RT	x	x			5 W	x		3			x	
7000132851	2273M-UC3W-RT	x	x			3 W	x		3				
2250M Series Kits	In addition to the items checked below, each kit contains an A-Frame, ground rod, Alkaline battery accessories and USB Type-C® accessories.												
7100081965	2250M-ID/UCU12W-RT	x		x		12 W	x	x	3		x	x	x
7000132854	2250M-ID/UU5W-RT	x		x		5 W		x	3			x	
7000132856	2250M-ID/UU3W-RT	x		x		3 W		x	3				
7000132853	2250M-ID/UC5W-RT	x		x		5 W	x		3			x	
7000132855	2250M-ID/UC3W-RT	x		x		3 W	x		3				
7010320602	2250M-UCU12W/RT	x				12 W	x	x	3		x	x	x
7000132858	2250M-UU5W-RT	x				5 W		x	3			x	
7000132861	2250M-UU3W-RT	x				3 W		x	3				
7000132857	2250M-UC5W-RT	x				5 W	x		3			x	
7000132860	2250M-UC3W-RT	x				3 W	x		3				
2220M Series Kits	In addition to the items checked below, each kit contains an A-Frame, ground rod, Alkaline battery accessories and USB Type-C® accessories.												
7000133066	2220M-CU12W/RT	x				12 W	x	x	3		x	x	x
7000058705	2220M-U3W	x				3 W		x					x
7000058711	2220M-U3W3-CPLR	x				3 W		x	3				x
7000058706	2220M-C3W-CPLR	x				3 W	x		3				x
2273 Series Kits	In addition to the items checked below, each kit contains an A-Frame, ground rod, Alkaline battery accessories and USB Type-C® accessories.												
7000132818	2273-U5P3/A	x	x			5 W		x	3			x	
7000132819	2273-U5T3/A	x	x			5 W	x		3			x	
7000132657	2273-U3P3	x	x			3 W		x	3				
7000132656	2273-U3T3	x	x			3 W	x		3				
2250 Series Kits	In addition to the items checked below, each kit contains an A-Frame, ground rod, Alkaline battery accessories and USB Type-C® accessories.												
7000132655	2250-U3P3	x				3 W		x	3				
7000132654	2250-U3T3	x				3 W	x		3				
1420	Each kit contains battery and USB Type-C® accessories.												
7000006159	1420			x									



Take expert-led, online electrical training anytime, anywhere, 24/7.
[3m.com/energy-academy](https://www.3m.com/energy-academy)



View our full product portfolio, create shareable project lists and more with our 3M™ Electrical App, available on [Google Play](#) and the [App Store](#)®.



Contact us at 1-800-245-3573 or [3M.com/Dynatel](https://www.3m.com/Dynatel)

Product Selection and Use: Many factors beyond 3M's control and uniquely within user's knowledge and control can affect the use and performance of a 3M product in a particular application. As a result, customer is solely responsible for evaluating the product and determining whether it is appropriate and suitable for customer's application, including conducting a workplace hazard assessment and reviewing all applicable regulations and standards (e.g., OSHA, ANSI, etc.). Failure to properly evaluate, select, and use a 3M product in accordance with all applicable instructions and with appropriate safety equipment, or to meet all applicable safety regulations, may result in injury, sickness, death, and/or harm to property.

Warranty, Limited Remedy, and Disclaimer: Unless a different warranty is specifically stated on the applicable 3M product packaging or product literature (in which case such warranty governs), 3M warrants that each 3M product meets the applicable 3M product specification at the time 3M ships the product. 3M MAKES NO OTHER WARRANTIES OR CONDITIONS, EXPRESS OR IMPLIED, INCLUDING, BUT NOT LIMITED TO, ANY IMPLIED WARRANTY OR CONDITION OF MERCHANTABILITY, FITNESS FOR A PARTICULAR PURPOSE, OR ARISING OUT OF A COURSE OF DEALING, CUSTOM, OR USAGE OF TRADE. If a 3M product does not conform to this warranty, then the sole and exclusive remedy is, at 3M's option, replacement or repair of the 3M product or refund of the purchase price. Warranty claims must be made within one (1) year from the date of 3M's shipment.

Limitation of Liability: Except for the limited remedy stated above, and except to the extent prohibited by applicable law, 3M will not be liable for any loss or damage arising from or related to the 3M product, whether direct, indirect, special, incidental, or consequential (including, but not limited to, lost profits or business opportunity), regardless of the legal or equitable theory asserted, including, but not limited to, warranty, contract, negligence, or strict liability.

Disclaimer: 3M industrial and occupational products are intended, labeled, and packaged for sale to trained industrial and occupational customers for workplace use. Unless specifically stated otherwise on the applicable product packaging or literature, these products are not intended, labeled, or packaged for sale to or use by consumers (e.g., for home, personal, primary or secondary school, recreational/sporting, or other uses not described in the applicable product packaging or literature), and must be selected and used in compliance with applicable health and safety regulations and standards (e.g., U.S. OSHA, ANSI), as well as all product literature, user instructions, warnings, and limitations, and the user must take any action required under any recall, field action or other product use notice. Misuse of 3M industrial and occupational products may result in injury, sickness, or death. For help with product selection and use, consult your on-site safety professional, industrial hygienist, or other subject matter expert. For additional product information, visit www.3m.com.



Electrical Markets Division
13011 McCallen Pass Blvd., Bldg C
Austin TX, 78753
800/200-0265 Fax 877/601-1305
www.3m.com/Dynatel

3M and Dynatel are trademarks of 3M Company. All other trademarks are property of their respective owners. Please recycle. Printed in USA.
© 3M 2022. All rights reserved.
80-6016-0846-8



CUSTOM WRAPS INDIA PVT LTD.

12/74, 12/73, Pioneer Complex, Site-IV Industrial Area,
Sahibabad, Ghaziabad, Uttar Pradesh-201010

Phone No.: 0120-4129371, 4128625

Email: info@customwrapsindia.com

Web: www.customwrapsindia.com

CIN: U74999UP2021PTC149365